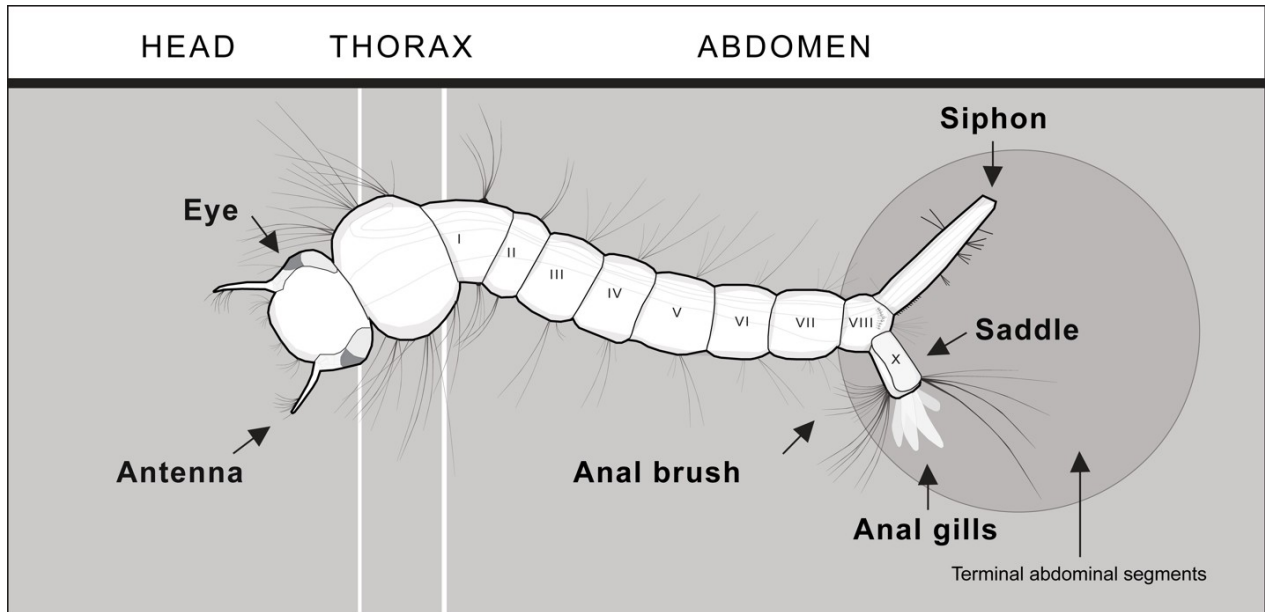


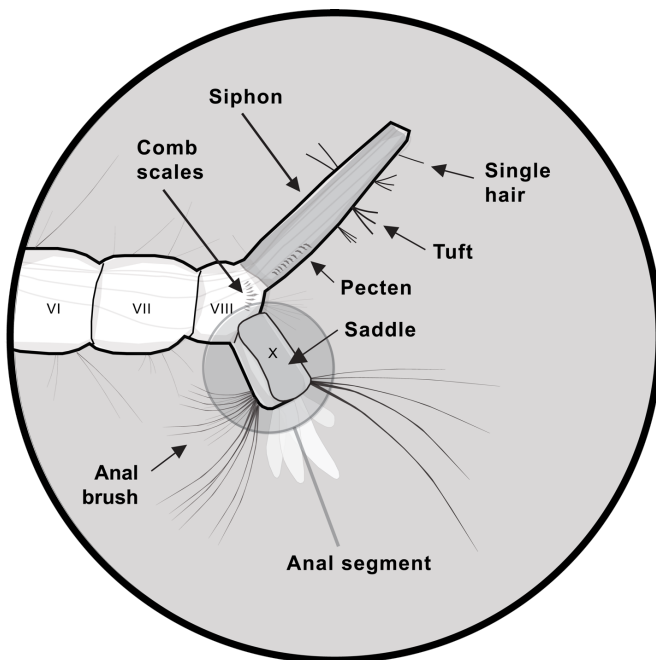


Know your Mosquito!

Major body parts of the mosquito larva

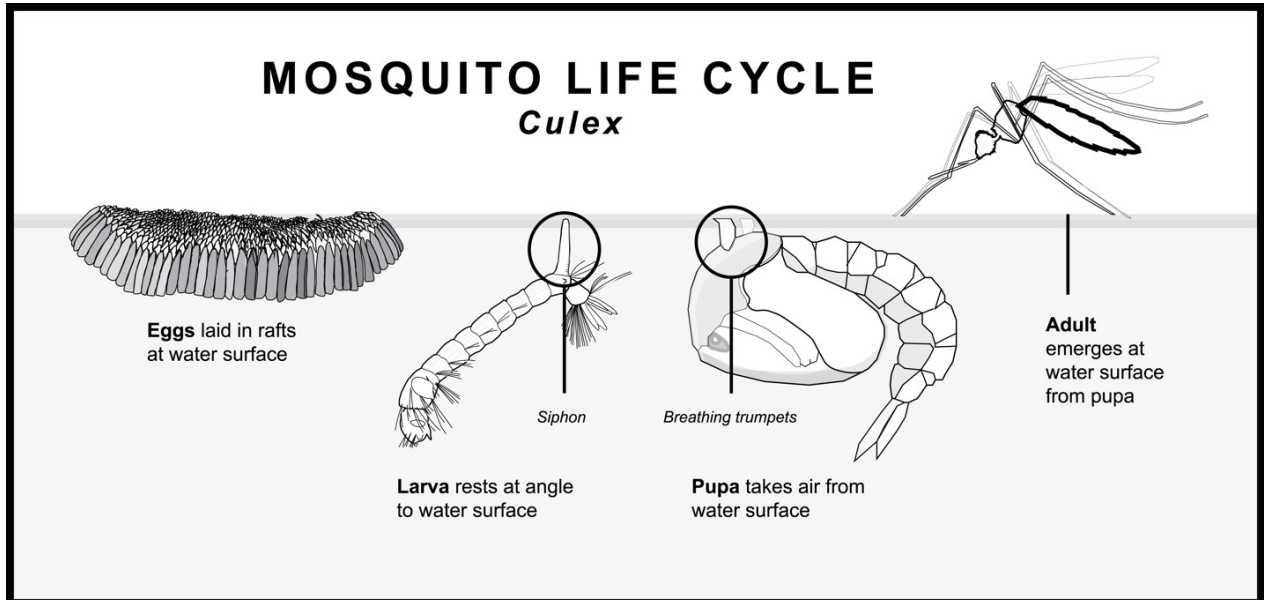


Close up of the terminal abdominal segments, important for identification of your larva:



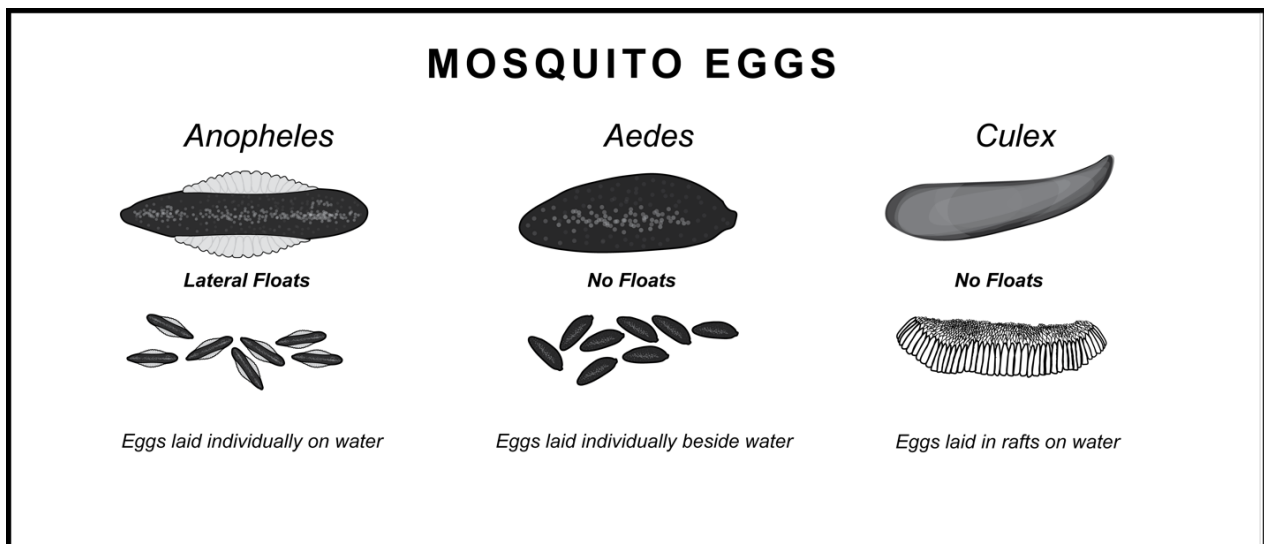
Mosquito Life Cycle

Here is the mosquito life cycle. We look at larvae, but you may also encounter pupae, eggs or even adults in your habitat.



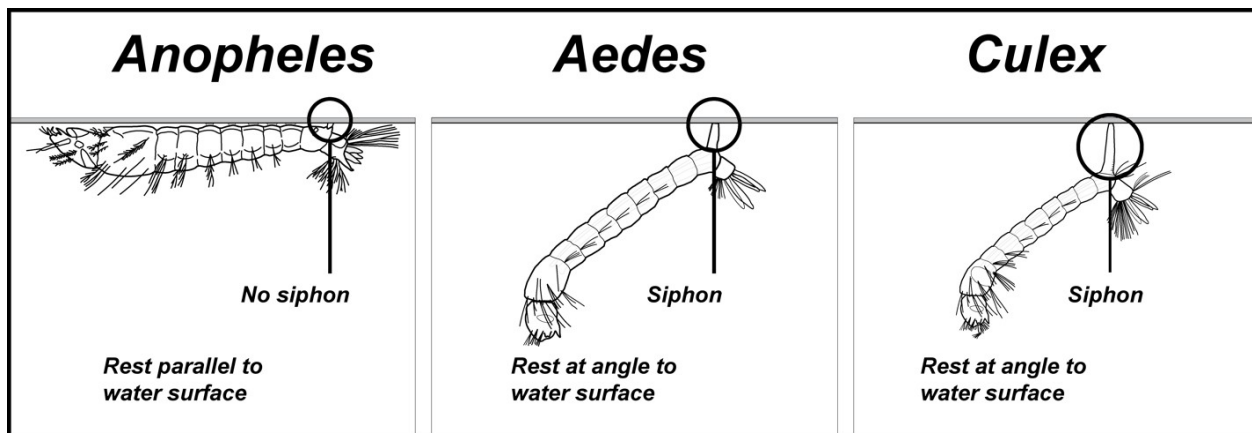
Mosquito Eggs: Comparison

Eggs are very small, you will only be able to distinguish these under a microscope.



Mosquito Larvae: Comparison

Differences between *Anopheles*, and genera *Aedes* and *Culex* in resting position. *Anopheles* rests parallel to the surface because it breathes from spicules located on the thorax. *Aedes* and *Culex* rest at an angle to the surface, suspended from the surface of the water by their siphon. They breathe through the siphon.



Pupae: Comparison

Note images are not diagnostic, it is not possible to identify the genera by looking at the pupal stage.

