



Science Background

1. Introduction to GO MHM
2. Mosquito Vectors of Disease
3. Satellite Data and NASA Connections-
4. Prior Knowledge Quiz

5. Using the app for the first time

6. Describing your mosquito habitat site using the GO MHM App

Lunch and Fieldwork

Hands-on session and Tour of GO MHM

7. Using the macrolens
8. Identifying specimens
9. Breakouts- Small Group Work
10. Education and Training Resources/ Bingo and Digital Games

A large illustration of a black mosquito standing in a pond. The pond has lily pads and reeds. The background shows a landscape with grass and a blue sky with a sun. The bottom half of the image is a dark blue gradient where the text is located.

Tips for using the GO MHM App

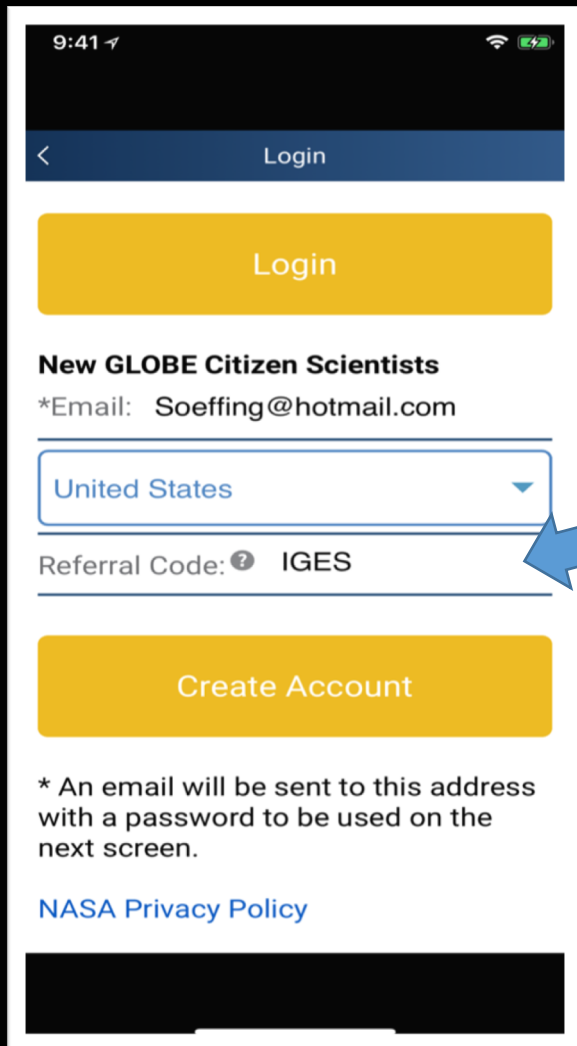


GLOBE Observer invites you to make environmental observations that complement NASA satellite observations to help scientists studying Earth and the global environment.

By using the GLOBE Observer app, you are joining the GLOBE community and contributing important scientific data to NASA and GLOBE, your local community, and students and scientists worldwide.

Get the app from your online app store.
Then open the app. You will need access
to your email to register.





9:41

< Login

Login

New GLOBE Citizen Scientists
*Email: Soeffing@hotmail.com

United States

Referral Code: ? IGES

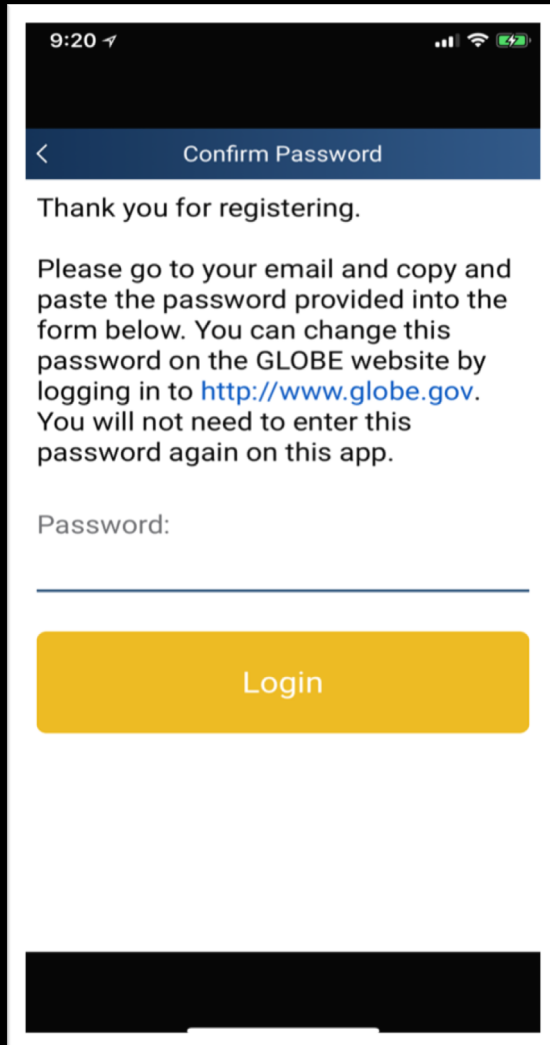
Create Account

* An email will be sent to this address with a password to be used on the next screen.

[NASA Privacy Policy](#)

When you open your app for the first time, you will get this message asking you to create your account.

Your workshop leader may provide you with a referral code. If so, enter it here



9:20

< Confirm Password

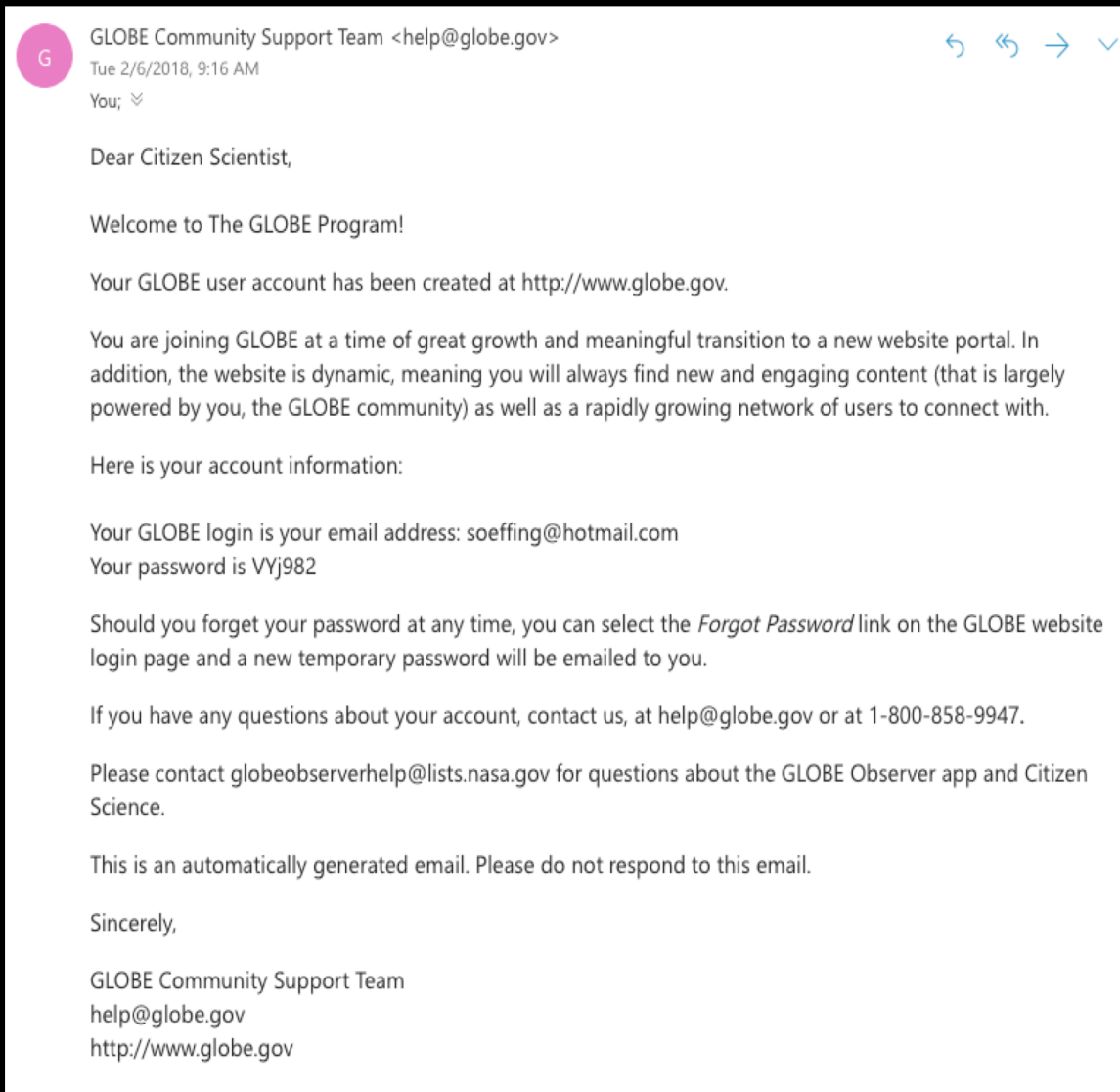
Thank you for registering.

Please go to your email and copy and paste the password provided into the form below. You can change this password on the GLOBE website by logging in to <http://www.globe.gov>. You will not need to enter this password again on this app.

Password:

Login

You will then get this message. You will need to get your password from the email you used to register.



You will receive an email that looks like this.
It provides a password to use with your log-in

When you download and install the MHM app if asked, allow access to location services. This part is important for recording your observations.



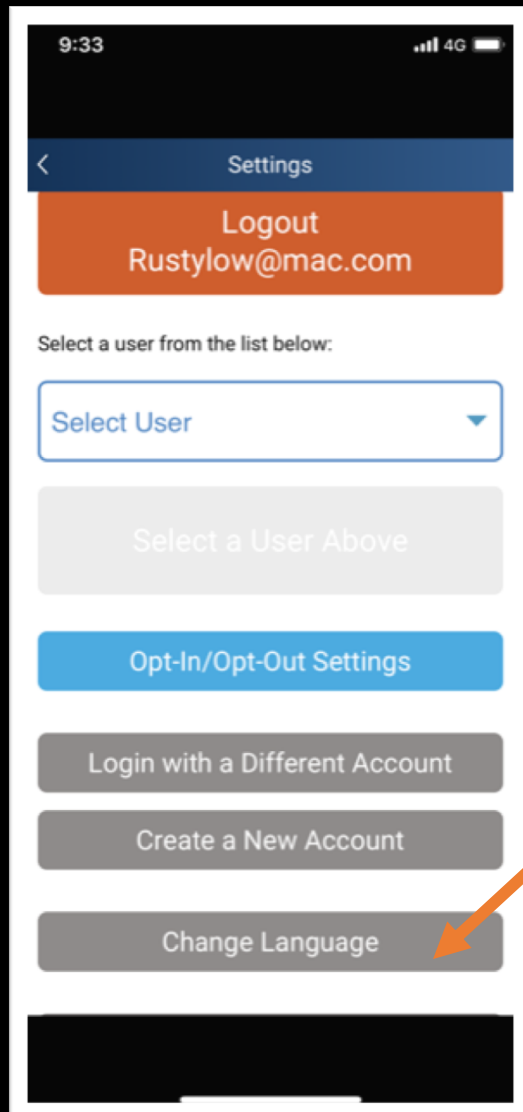
Click on the icon for GLOBE Mosquito Habitat Mapper.

To return to this screen at any time, click on the "home" button.

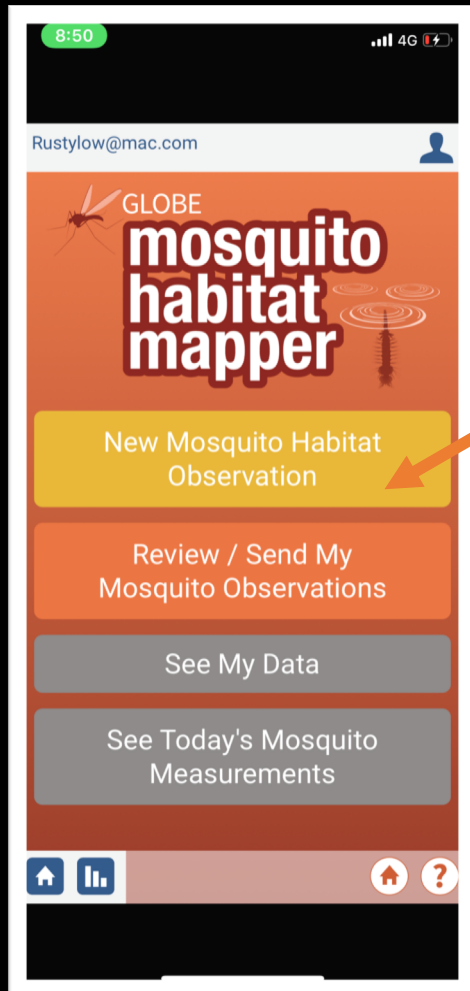


At the top of the first frame you will see your email.

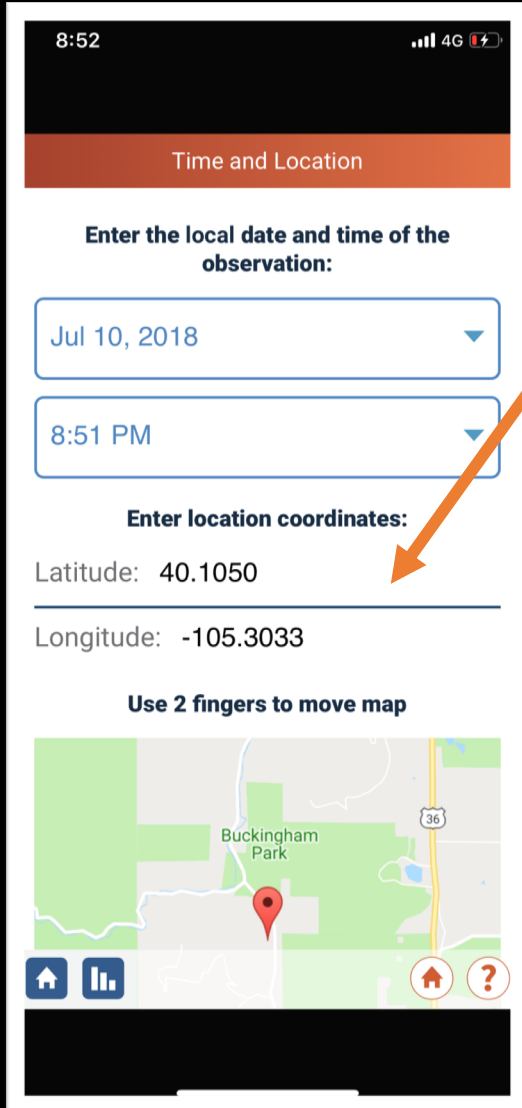
If you click on your email, you can personalize your settings.



You can choose the language that you want to display by selecting “Change Language.”



To begin, click on
“New Mosquito Habitat Observation”

A screenshot of the GLOBE Observer app interface. At the top, the status bar shows 8:52, 4G signal, and battery level. Below is a red header with the text "Time and Location". The main section is titled "Enter the local date and time of the observation:". It contains two dropdown menus: the first shows "Jul 10, 2018" and the second shows "8:51 PM". Below these is the section "Enter location coordinates:" with "Latitude: 40.1050" and "Longitude: -105.3033". An orange arrow points from the text "If you don't see the location coordinates, check to make sure your phone settings have selected 'geolocation' on." to the latitude field. At the bottom, it says "Use 2 fingers to move map" above a map showing "Buckingham Park" with a red location pin. The map has navigation icons at the bottom: a home icon, a list icon, a location pin icon, and a question mark icon.

The date, time, latitude and longitude will automatically populate these fields.

If you don't see the location coordinates, check to make sure your phone settings have selected "geolocation" on.

You can also input these values from a map manually.



8:52 4G

Time and Location

Enter the local date and time of the observation:

Jul 10, 2018


8:51 PM

Enter location coordinates:

Latitude: 40.1050

Longitude: -105.3033

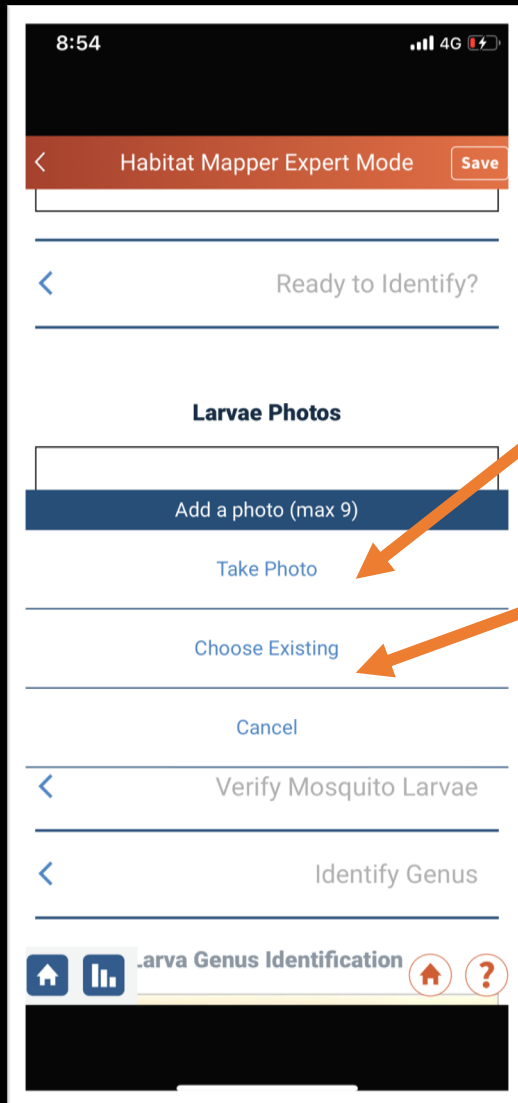
Use 2 fingers to move map



Map showing Buckingham Park and surrounding area. A red pin is placed on the map. An orange arrow points from the text 'You can also provide a more precise location by moving the map with two fingers, so the flag is exactly where you want it.' to the red pin.

You can also provide a more precise location by moving the map with two fingers, so the flag is exactly where you want it.

Hint: Don't touch this part of the screen unless you want to move the map. You might accidentally move the map far enough that you'll find your measurement in the ocean!



8:54 4G

< Habitat Mapper Expert Mode Save

< Ready to Identify?

Larvae Photos

Add a photo (max 9)

Take Photo

Choose Existing

Cancel

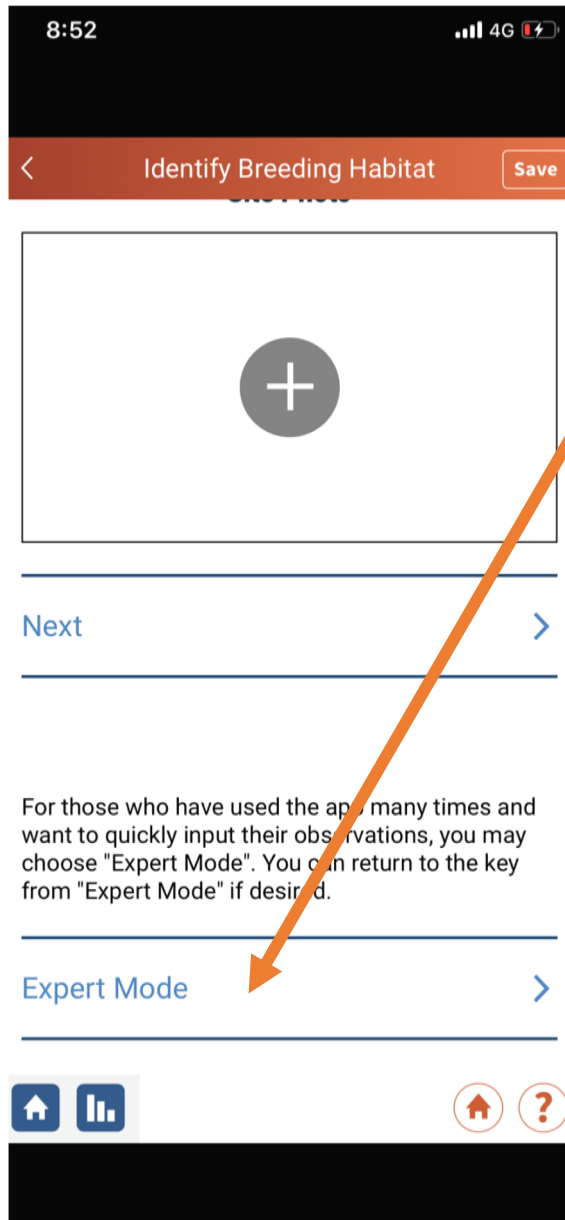
< Verify Mosquito Larvae

< Identify Genus

Home Bar: Home, List, .arva Genus Identification, Home, Help

You can take photos in app by clicking on “take photo”.

You can also upload a photo from your camera roll by selecting “choose existing”



The app will ask you if you want to use “expert mode”.

After you have been through the app one or two times, we suggest you use expert mode. It provides a simple, streamlined process- it’s easier!

If at anytime you need to consult the mosquito key, you can access it from expert mode!



Questions? We are here to help you!



The screenshot shows the GLOBE Observer website. At the top, there's a navigation bar with links: About, News & Events, Training, Science, Resources, Tips & Help, and Get the App. Below this is a large banner for the 'Mosquito Habitat Mapper' with a red mosquito illustration and the text: 'Help us work together to reduce the threat of mosquito-borne diseases in your community!'. Below the banner is a 'Welcome' section with a paragraph about the GLOBE Observer initiative and a video player titled 'GLOBE Observer Quick Data Viz - 5 Min Intervals with ...'. The video player shows a map of the United States with data points. Below the video player, there's a small text block: 'We received over 60,000 air temperature measurements and nearly 20,000 clouds observations from more than 10,000 observers! While our team is working on analyzing the data, we also encourage citizen scientists of all ages to try their hand at doing their own analysis. Go to our data analysis page for example.'

Find more information on the GLOBE Observer website

- www.globe.gov/es/web/globe-observer/

Problems? Contact help@globe.gov



Acknowledgements

Mosquito Habitat Mapper Team USA

Russanne Low, IGES
Holli Riebeek Kohl, GSFC
Kristen Weaver, GSFC
Dorian Janney, GSFC
Theresa Schwerin, IGES
Cassie Soeffing, IGES
David Overoye, SSAI
Rebecca Boger, Brooklyn College
Pablo Munoz, INTEL
Krishna Woerheide, UNL

NASA Mosquito Mapper Project Scientists

Dr. Assaf Anyamba GSFC
Dr. Radina Soebiyanto, GSFC
Dr. Sara Paul, UC Denver
Dr. Lee Coenstadt, USDA
NASA Develop Team

Project Leads- GLOBE Brazil

Dr. Rodrigo Leonardi, Country Coordinator
Dr. Nadia Sacenco, Deputy Coordinator
Dr. Aline Venoso, AEB, Brasilia
Prof. Ines Mauad, Rio de Janeiro
Prof. Renee Codsí, Salvador
Dr. Rodrigo Antes Reis, Matinhos

Project Leads- GLOBE Peru

Jose Martin Cardinas Silva, Country Coordinator
Marissa Valdez, Peace Corps
Karina Quintero, GLOBE Master Trainer

Contact:

rusty_low@strategies.org



Author:

Russanne Low PhD

Institute for Global Environmental Strategies

Science Lead, GLOBE Observer Mosquito Habitat

Mapper

Rusty_low@strategies.org



Attribution-NonCommercial-ShareAlike
4.0 International (CC BY-NC-SA 4.0)

This work is licensed under

[https://creativecommons.org/licenses/
by-nc-sa/4.0/](https://creativecommons.org/licenses/by-nc-sa/4.0/)

Educators: did you modify this file for your class? Put your name and the date here!