

GLOBE mosquito habitat mapper

A Step-by-Step Guide



All you need to start monitoring mosquitoes is a smartphone or tablet.

The first time you open the app, you will need to be online in order to set up your account. A password will be sent to your email.

You can take observations offline, just remember to upload them later!

You Will Need:

1 Locate Potential Mosquito Habitats



Download GLOBE Observer and open Mosquito Habitat Mapper.

Find places where water has collected.

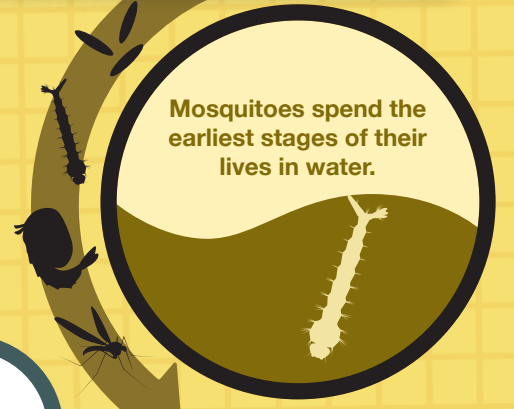


Verify the time and location.

Select the type of habitat.

Take photos.

Mosquitoes spend the earliest stages of their lives in water.



Potential Mosquito Habitat

You Will Need:

Safety First! Mosquitoes can carry dangerous diseases. Protect yourself by wearing long sleeves and using insect repellent.

2 Sample and Count

Collect a sample from the surface of the water.

Use a cup or bulb syringe.



Move the sample to a shallow container for counting, if necessary.

Only adult ♀ mosquitoes bite.



Look for the different stages of the mosquito life cycle.

Count and input the data into the app.



You Will Need:

Safety First! Use gloves to protect yourself from contaminated water sources. Do NOT collect samples with your bare hands.

3 Identify Larva Type

Isolate the largest larva on a white surface.

Terminal Segments
Abdomen
Thorax
Head

You will need a clip-on microscope with 60x magnification or higher for your phone or tablet.

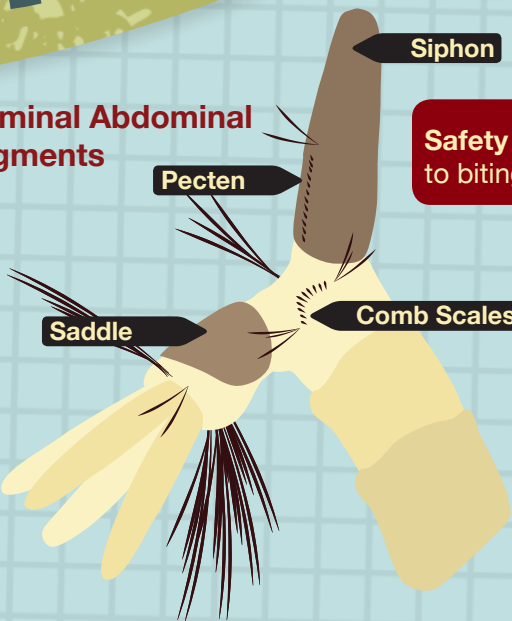


These can be purchased online.

Set up your microscope attachment.

Use a probe to position the larva.

Terminal Abdominal Segments



Safety First! If possible, move inside to limit your exposure to biting adult mosquitoes while identifying your larva.

If the larva is moving too much, remove the water around it and add a drop of rubbing alcohol.

Look for identifying features.

Use the app to identify your specimen.

Only some species of mosquitoes can transmit dangerous diseases, like malaria and Zika.

★ Eliminate the Habitat



Once you have finished your observation, eliminate the habitat by dumping or covering the water.

View your observations and others at: vis.globe.gov

Nice work! Regardless of how many steps you completed, you just provided valuable information to scientists while helping your community.